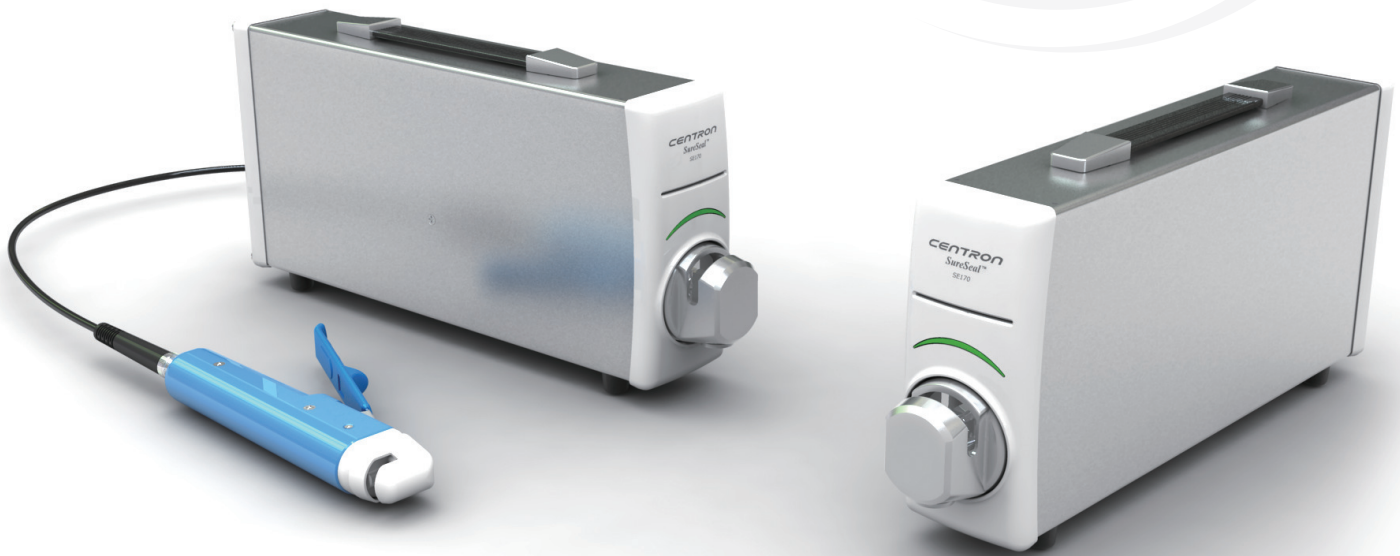


**Don't just seal, SURESEAL**



# **CENTRON**

## ***SureSeal™* SE170**

### **TUBE SEALER**

#### **One is enough - THE TUBE SEALER**

*SureSeal™* SE170 is designed for both single and multi-segment operation. Adjustable sealing power modes and compact design guarantee optimal sealing outputs under any condition.

#### ■ Features


- Smart Technology - The world first adjustable sealing power modes with automatic tuning
- Premium Sealing Quality - Wide sealing ensures fast and accurate results
- Multi-segment set up available - Automatic sequential sealing
- Variable sealing spacing: 65, 70, 75, 80, 85, 90, 95, 100 mm  
(Or, any distance up to 200 mm upon request)
- Automatic tube and arc detection
- LED indicator to display sealing progress and alarms
- *SureSeal™* hand unit ready
- Head protector / Splash guard for user safety

**Centron**

Smart Solutions for Smarter Bloodbanking

New state-of-the-art sealing head

- New sealing technology ensures safe sealing of even thick and sensitive tubings with wide sealed surface.
- Adjustable Power Mode - User can easily choose sealing power output according to blood bag maker, type and operating conditions. Combined with existing micro-tuning optimization process, user can always expect reliable outcome. Please provide us blood bag information and operating condition for recommended power mode.
- Sealing will automatically start when tubing is placed in the sealing head.
- Head protector for safe and easy operation - detachable, easy to clean
- Applicable tubing diameter 2-6 mm (1/4")




**Splashguard**

- protects users from accidental blood splash
- Detachable, easy to clean


**Indication lamp**

- shows sealing progress




**Wide sealed surface with notch at the center**

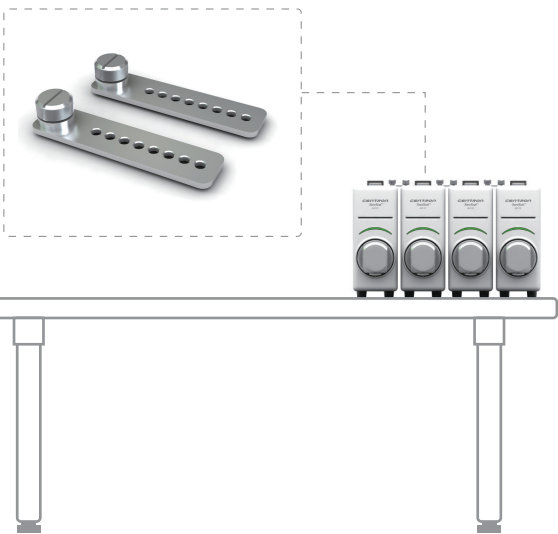
- Reliable sealing quality prevents leakage
- Easy to segment



Multi tube sealing setup example

- Linkage bars are provided for easy multi sealing head unit installation.
- Sealing hand unit can be attached at any main unit.





Specification

Product	TUBE SEALER
Model	SE170
Main Power	100-250V~ 50/60Hz 250W
Dimension	Main unit: 65(W)mm/365(L)mm/167(H)mm
	Hand unit: 28(W)mm/204(L)mm/44(H)mm

 Centron Corporation

**Address:** 44 Beolmal-ro, Dongan-gu, Anyang, Gyeonggi-do,  
Postal Code 14059 / Republic of Korea  
**Phone:** +82-31-422-7890 / **Fax:** +82-31-422-7866  
**E-mail:** info@centrons.com  
**Website:** www.centrons.com



※ The specification and design are subject to change without prior notice for product upgrades.

Information



DISTRIBUTOR

